



KONICA MINOLTA

NEW Spectrophotometer

CM-26dG

CM-26d

CM-25d



Advanced performance
for the times.

Color Management
for global supply chains.

Highest level of repeatability with high inter-instrument agreement, speed and usability.

The CM-26dG Series from Konica Minolta offers three variations of advanced portable spectrophotometers.

The high-end CM-26dG and CM-26d models bring the industry's highest level of accuracy, with the CM-26dG capable of simultaneously measuring color and gloss, and the CM-26d specifically for measuring color.

The CM-25d is a single aperture model.

NEW Spectrophotometer

CM-26dG | CM-26d | CM-25d



■ **Viewfinder**

The viewfinder brightly illuminates the measurement point with an LED to make target alignment, easier and more precise. The viewfinder of the CM-26dG also includes a target ring that makes it even easier to identify the measurement area. Using the viewfinder greatly reduces measurement errors when setting measurement points on patterns and prints.



■ **Compact, lightweight streamlined body**

Designed to work in hard-to-reach places, the CM -26dG Series spectrophotometers allow users to take measurements where previous models could not. The nose is angled downward and rounded at the corners to get into cramped spots like dashboards at a point near the windshield. The measurement button is accessible from both sides of the unit, improving usability for left handed operators or in otherwise difficult to reach areas.



JOB function execution screen

(Actual size)

■ **High usability and functional versatility**

<JOB Function>

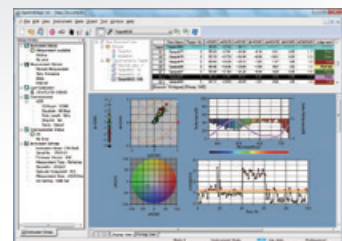
Measurement instructions (including photographs) for routine tasks can be uploaded to the instrument using SpectraMagic NX (Ver. 2.9 or later, sold separately).

<Bluetooth® ready>

Data can be wirelessly transmitted to computers or other paired devices over a Bluetooth connection.

Color Data Software SpectraMagic NX

SpectraMagic NX is color management software that gives users a plethora of functions for viewing data and for operating and configuring their spectrophotometers from a computer. Users can customise templates and reports by arranging and editing spectral graphs, color difference graphs (2D, 3D), PASS/FAIL indications and other objects to suit their needs.



SpectraMagic NX Ver. 2.9 or later ●OS : Windows® 7 Professional 32 bit, 64 bit / Windows® 8.1 Pro 32 bit, 64 bit / Windows® 10 Pro 32 bit, 64 bit

* The computer must be running one of the above OS and meet or exceed the below specifications.

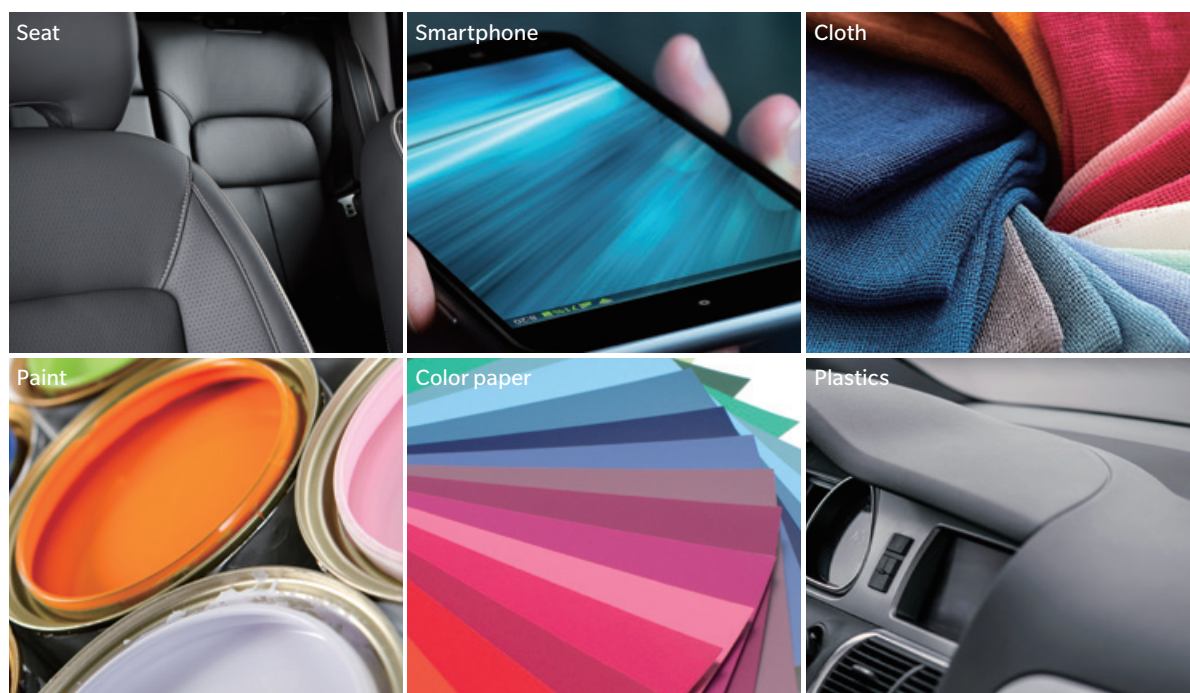
●CPU: Pentium® III 600 MHz equivalent or faster ●Memory:128 MB or more (256 MB or more recommended) ●Hard disk: 450 MB or more of free space for installation ●Display: Resolution: 1,024x768 pixels or more/ 16-bit colors or more ●Other: DVD-ROM drive (for software installation), USB port (for entering the protection key), USB or serial port (for connecting to spectrophotometers) and Internet Explorer Ver. 5.01 or later installed

•Windows® is a trademark or registered trademark of Microsoft Corporation in the USA and other countries.

•Pentium® is a trademark or registered trademark of Intel Corporation in the USA and other countries.

■ **CM-26dG Series spectrophotometers can be used in a wide range of industries.**

Automotive interiors, ICT products, Home appliances, Paint, Ceramics, Plastics, Solar panels, Glass, etc.



■ **Performance by model**

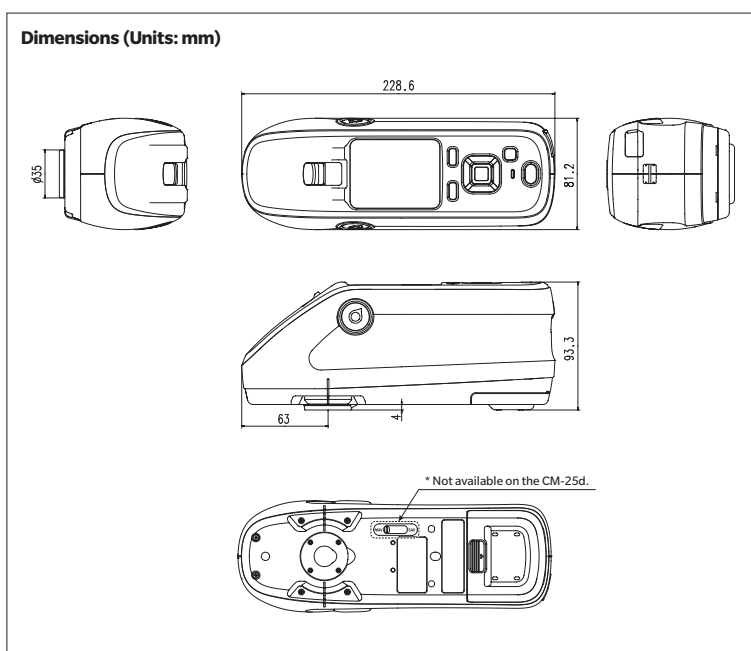
	CM-26dG	CM-26d	CM-25d
SCI	●	●	●
SCE	●	●	●
60° gloss	●	—	—
MAV (Ø8 mm)	●	●	●
SAV (Ø3 mm)	●	●	—
UV	100% / 0% selectable	100% / 0% selectable	0% only
Inter-instrument agreement (Color)	<0.12	<0.12	<0.20
Repeatability ($\sigma\Delta E^*ab$)	<0.02	<0.02	<0.04
Wavelength range	360 - 740 nm	360 - 740 nm	400 - 700 nm



Stapler Type Target Mask CM-A268



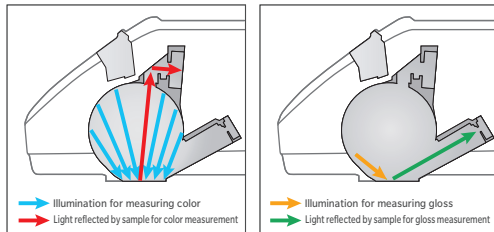
Target Mask (MAV; w/ glass) CM-A277



•KONICA MINOLTA, the Konica Minolta logo and symbol mark, "Giving Shape to Ideas" and SpectraMagic™ are registered trademarks or trademarks of KONICA MINOLTA, INC. •Bluetooth® is a registered trademark of Bluetooth SIG, Inc. and is used under license agreement. •Displays shown are for illustration purposes only. •The specifications and appearance shown herein are subject to change without notice.

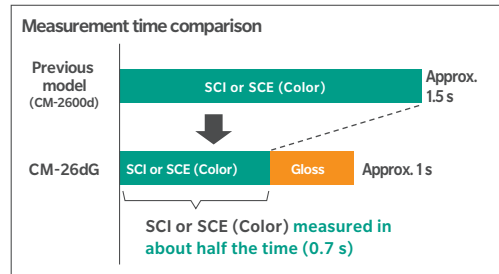
■ 2-in-1 instrument for measuring color and gloss

The CM-26dG performs the job of two instruments by simultaneously measuring color and gloss. The integrated gloss sensor will significantly improve the speed of the inspection process & remove the need for a separate gloss device.



■ Improved measurement speed

The CM-26dG measures color in about half the time of previous models, at approx. 0.7 second (SCI or SCE). Measurements of both color and gloss (SCI or SCE + Gloss) can be made in around 1 second. The faster measuring speed directly improves efficiency.



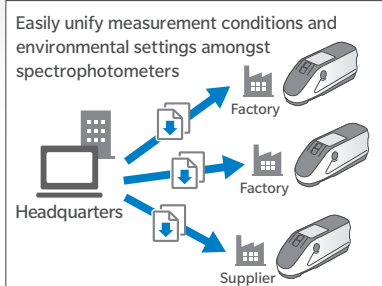
(Actual size)

■ Highest levels of repeatability and inter-instrument agreement amongst portable spectrophotometers

Supply chains are constantly being built and modified, and data needs to be seamlessly shared amongst both internal and external partners. High repeatability and high inter-instrument agreement are increasingly prerequisites for portable spectrophotometers to expedite specification, supply and quality control. The CM-26dG and CM-26d realize the highest level of inter-instrument agreement amongst currently available portable spectrophotometers, at ΔE^*ab 0.12 (BCRA average amongst 12 colors); this is around half that of their predecessor the CM-2600d. When measuring gloss, the inter-instrument agreement of the CM-26dG is within ± 0.2 GU (0-10 GU) or ± 0.5 GU (10-100 GU). The improved accuracy of the CM-26dG will allow supply chains to operate at closer tolerances and facilitate digital color management, cutting reliance on physical standards, greatly improving timelines and associated costs.

<Quick and easy-to-use Spectrophotometer Configuration Tool CM-CT1>

The CM-CT1 gives manufacturers the means for easily and quickly setting up their CM-26dG Series spectrophotometers. Moreover, when multiple devices are used or when the same conditions need to be set amongst multiple factories or suppliers, settings can be compiled into a file and shared.



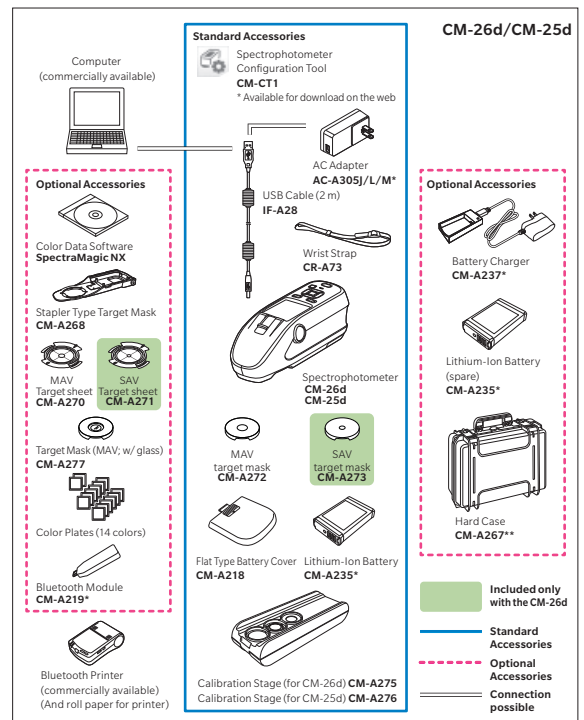
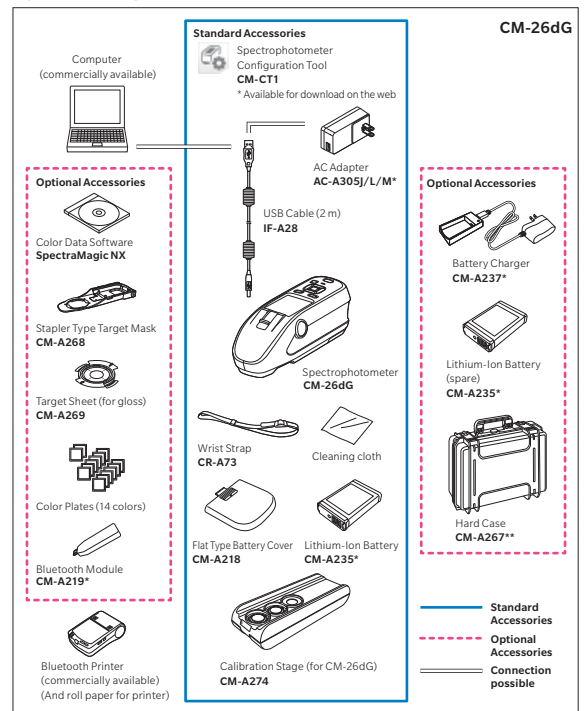
Spectrophotometer Configuration Tool CM-CT1 ●OS : Windows® 7 32 bit, 64 bit / Windows® 8.1 32 bit, 64 bit / Windows® 10 32 bit, 64 bit
 ●CPU: 2 GHz equivalent or faster ●Memory: 2 GB or more ●Hard disk: 10 GB or more of free space for installation ●Display: Resolution: 1,024 x 720 pixels or more/ 16-bit colors or more ●Other: USB port (For connecting to spectrophotometers)
 •Windows® is a trademark or registered trademark of Microsoft Corporation in the USA and other countries.

Specifications

Model	CM-26dG	CM-26d	CM-25d
Illumination/ viewing system	di: 8°, de: 8° (diffuse illumination: 8° viewing) SCI (specular component included) / SCE (specular component excluded) switchable		
Integrating sphere	Ø54 mm		
Light source	Pulsed xenon lamp × 2		Pulsed xenon lamp × 1
Detector	Dual 40-element silicon photodiode arrays		Dual 32-element silicon photodiode arrays
Spectral separation device	Planar diffraction grating		
Measurement wavelength range	360 to 740 nm		400 to 700 nm
Measurement wavelength pitch	10 nm		
Half bandwidth	Approx. 10 nm		
Reflectance measurement range	0 to 175%; Display resolution: 0.01		
Illumination area	12 × 12.5 mm (circle + ellipse)	MAV: Ø12 mm SAV: Ø6 mm	MAV: Ø12 mm
Measurement area	MAV: Ø8 mm, SAV: Ø3 mm		MAV: Ø8 mm
Repeatability	Standard deviation within ΔE*ab 0.02 (When a white calibration plate is measured 30 times at 5-second intervals after white calibration)		Standard deviation within ΔE*ab 0.04
Inter-instrument agreement	Within ΔE*ab 0.12 (Based on average for 12 BCRA Series II color tiles; MAV SCI; compared to values measured with a master body under KONICA MINOLTA standard measurement conditions)		Within ΔE*ab 0.20
UV	100% / 0% selectable		0% only
Observer	2° observer angle, 10° observer angle		
Illuminant	A, C, D50, D65, F2, F6, F7, F8, F10, F11, F12, ID50, ID65, User-defined illuminant*1 (Simultaneous evaluation with two light sources possible)		
Display items	Colorimetric values/graph, color difference values/graph, spectral graph, pass/fail judgment, pseudocolor		
Colorimetric values	L*a*b*, L*C*h, Hunter Lab, Yxy, XYZ, and color difference in these spaces; Munsell (C)		
Indexes	MI, WI (ASTM E313-73), YI (ASTM E313-73, ASTM D1925), ISO brightness (ISO 2470), WI/Tint (CIE), Strength, Opacity, Grey scale, 8° gloss value, User index*1		
Color difference equations	ΔE*ab (CIE1976) / ΔE94 (CIE1994) / ΔE00 (CIE2000) / CMC (l:c) / Hunter ΔE / DIN99a		
Applicable standards	DIN 5033 Teil 7, JIS Z 8722 Condition "c", ISO 7724/1, CIE No. 15		
Measurement angle	60°		—
Light source	White LED		—
Detector	Silicon photodiode		—
Measurement range	0 to 200 GU; Display resolution: 0.01 GU		—
Measurement area	MAV: 10 × 7 mm, SAV: Ø3 mm		—
Repeatability	Standard deviation 0 to 9.99 GU: Within 0.1 GU 10 to 99.99 GU: Within 0.2 GU 100 to 200 GU: Within 0.2% of indicated value (When measured 30 times at 5-second intervals after calibration)		—
Inter-instrument agreement	0 to 9.99 GU: Within ±0.2 GU 10 to 99.99 GU: Within ±0.5 GU (MAV; compared to values measured with a master body under KONICA MINOLTA standard measurement conditions)		—
Applicable standards	JIS Z8741 (MAV only), JIS K5600, ISO 2813, ISO 7668 (MAV only), ASTM D523-08, ASTM D2457-13, DIN 67530		—
Measurement time	Approx. 1 s (Measurement mode: SCI + Gloss or SCE + Gloss)	Approx. 0.7 s (Measurement mode: SCI or SCE)	—
Minimum measurement interval	Approx. 2 s (Measurement mode: SCI + Gloss or SCE + Gloss)	Approx. 1.5 s (Measurement mode: SCI or SCE)	—
Data memory	1,000 target data + 5,100 sample data		
Battery performance	Measurement mode: SCI + Gloss or SCE + Gloss		Measurement mode: SCI or SCE
Viewfinder function	Available (with white LED illumination)		
Display	2.7" color TFT-LCD with reversible portrait viewing mode		
Display language	English, Japanese, German, French, Italian, Spanish, Simplified Chinese, Portuguese, Russian, Turkish, Polish		
Interface	USB 2.0; Bluetooth (SPP-compatible. Optional Bluetooth module required)		
Power	Dedicated lithium-ion battery (removable), USB bus power (with lithium-ion battery installed), Dedicated AC adapter (with lithium-ion battery installed)		
Charging time	Approx. 6 h		
Operating temperature/humidity range	Temperature: 5 to 40°C, Relative humidity: 80% or less (at 35°C) with no condensation		
Storage temperature/humidity range	Temperature: 0 to 45°C, Relative humidity: 80% or less (at 35°C) with no condensation		
Size	Approx. 81 (W) × 93 (H) × 229 (D) mm		
Weight	Approx. 660 g	Approx. 630 g	Approx. 620 g

*1 Optional Color Management Software SpectraMagic NX is required for setting user-configured illuminants or user indexes.

System Diagram



* Depending on the location, some accessories may not be available.
** May be included as a standard accessory in some regions.

SAFETY PRECAUTIONS

For correct use and for your safety, be sure to read the instruction manual before using the instrument.

- Always connect the instrument to the specified power supply voltage. Improper connection may cause a fire or electric shock.

ISO Certifications of KONICA MINOLTA, Inc., Sakai Site

JQA-QMA1588
Design, development, manufacture/
manufacturing management, calibration, and
service of measuring instruments

JQA-E-80027
Design, development,
manufacture, service and sales
of measuring instruments

KONICA MINOLTA, INC.
Konica Minolta Sensing Americas, Inc.
Konica Minolta Sensing Europe B.V.

Osaka, Japan
 New Jersey, U.S.A.
 European Headquarter /BENELUX
 German Office
 French Office
 UK Office
 Italian Office
 Swiss Office
 Nordic Office
 Polish Office
 Turkish Office
 SE Sales Division
 Beijing Office
 Guangzhou Office
 Chongqing Office
 Qingdao Office
 Wuhan Office

Konica Minolta (CHINA) Investment Ltd.
Konica Minolta Sensing Singapore Pte Ltd.
Konica Minolta Sensing Korea Co., Ltd.

Phone : 888-473-2656 (in USA), 201-236-4300 (outside USA)
Phone : +31 (0) 30 248-1193
Phone : +49 (0) 89 4357 156 0
Phone : +33 (0) 1 80 11 10 70
Phone : +44 (0) 1925 467300
Phone : +39 02849488.00
Phone : +41 (0) 43 322-9800
Phone : +46 (0) 31 7099464
Phone : +48 (0) 71 73452-11
Phone : +90 (0) 216-528 56 56
Phone : +86- (0) 21-5489 0202
Phone : +86- (0) 10-8522 1551
Phone : +86- (0) 20-3826 4220
Phone : +86- (0) 23-6773 4988
Phone : +86- (0) 532-8079 1871
Phone : +86- (0) 27-8544 9942
Phone : +65 6563-5533
Phone : +82 (0) 2-523-9726

Fax : 201-785-2482
Fax : +31 (0) 30 24 81 211
Fax : +49 (0) 89 4357 156 99
Fax : +33 (0) 1 80 11 10 82
Fax : +44 (0) 1925 711143
Fax : +39 02849488.30
Fax : +41 (0) 43 322-9809
Fax : +48 (0) 71 734 52 10
Fax : +90 (0) 212-253 49 69
Fax : +86- (0) 21-5489 0005
Fax : +86- (0) 10-8522 1241
Fax : +86- (0) 20-3826 4223
Fax : +86- (0) 23-6773 4799
Fax : +86- (0) 532-8079 1873
Fax : +86- (0) 27-8544 9991
Fax : +65 6560-9721
Fax : +82 (0) 31-995-6511

Addresses and telephone/fax numbers are subject to change without notice. For the latest contact information, please refer to the KONICA MINOLTA Worldwide Offices web page :

©2019 KONICA MINOLTA, INC.

<https://konicaminolta.com/instruments/network>

9242-AC5J-41 BJEK2